

## SILICONE POLYESTER - SMP



Polar White PPOL\*



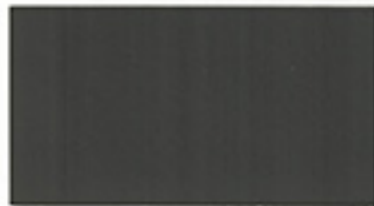
Light Stone



Ash Gray



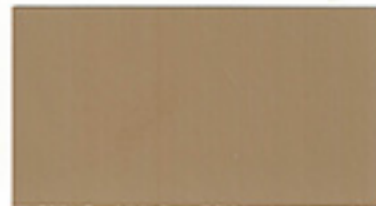
Desert Sand



Charcoal Gray



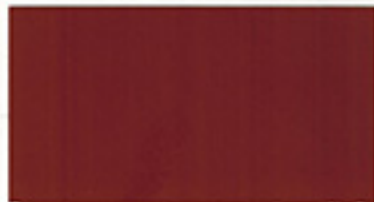
Burnished Slate



Saddle Tan



Hawaiian Blue



Rustic Red



Fern Green



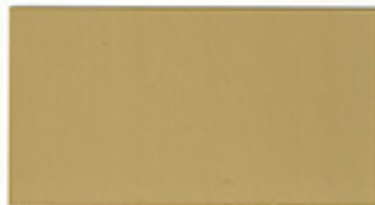
Solar White



Koko Brown



Evergreen



Aztec Gold



Crimson Red



Colony Green

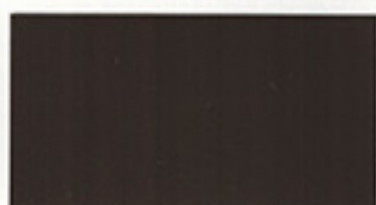
## FLUOROPOLYMER KYNAR 500®



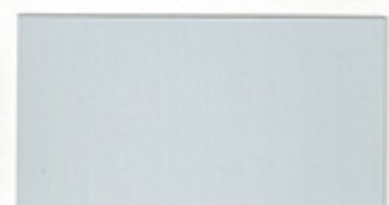
Regal Red



Gallery Blue



Medium Bronze



Snow White



Slate Gray



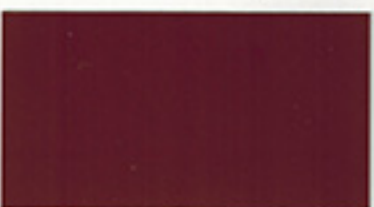
Almond



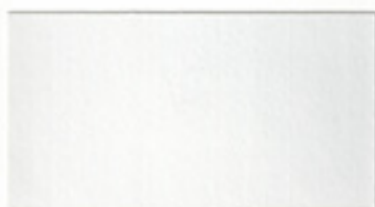
Classic Green



Brownstone



Colonial Red



Bone White



Midnight Bronze



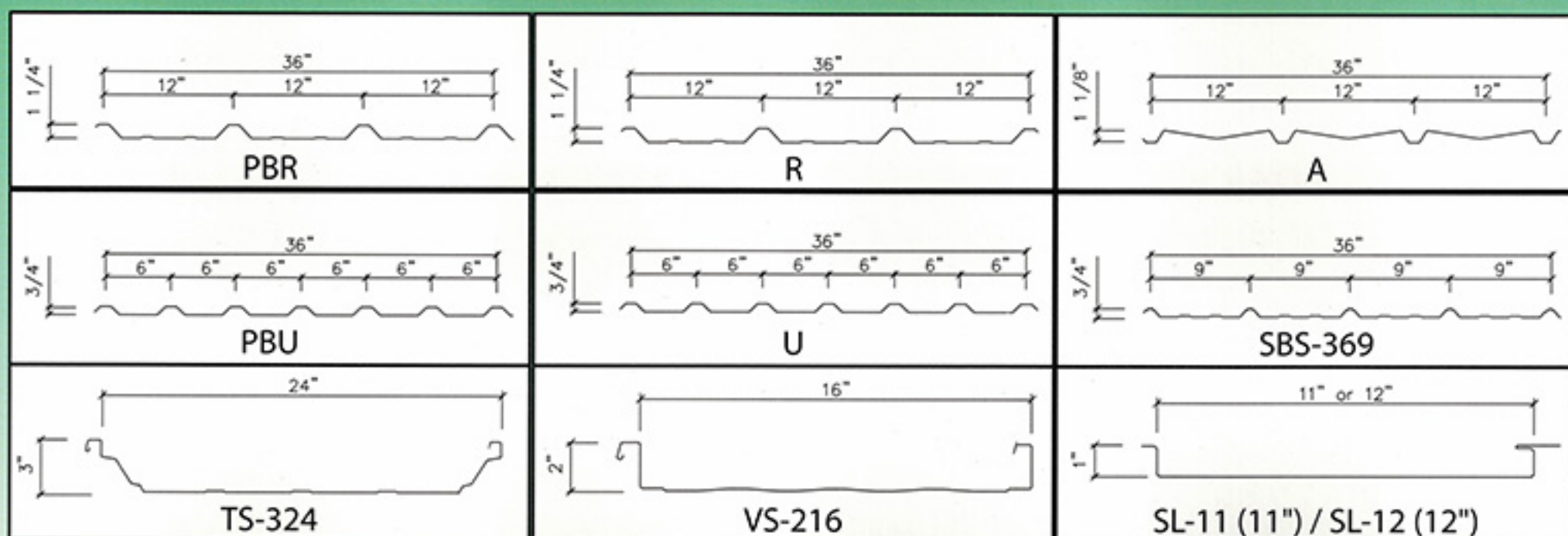
All colors are Energy Star® certified.

*These color samples are as close as possible to the actual colors offered within the limitations of color-chip reproduction.*

*\*Polar White is a premium polyester product (PPOL) not an SMP.*

| PROFILE     | 29 Gauge   |     | 26 Gauge   |     |           |            | 24 Gauge   |     |            | 22 Gauge   |     |
|-------------|------------|-----|------------|-----|-----------|------------|------------|-----|------------|------------|-----|
|             | Galvalume® | SMP | Galvalume® | SMP | Commodity | Kynar 500® | Galvalume® | SMP | Kynar 500® | Galvalume® | SMP |
| PBR         |            |     | •          | •   |           | •          | •          | 1   | •          | •          | 5   |
| R           | •          |     |            |     | •         |            |            |     |            |            |     |
| PBU         |            |     | •          | •   |           | •          | •          | 1   | •          | •          | 5   |
| U           | •          |     |            |     | •         |            |            |     |            |            |     |
| A           |            |     | •          | •   |           | •          | •          | 1   | •          | •          | 5   |
| SBS-369     | •          | •   | •          | •   | •         | •          |            |     |            |            |     |
| TS-324      |            |     |            |     |           |            | •          | 2   | •          |            |     |
| VS-216      |            |     |            |     |           |            | •          | 2   | •          |            |     |
| SL-11/SL-12 |            |     |            |     |           |            | 4          | 3   | 4          |            |     |

1. Available in Polar White and Solar White Only
2. Available in Solar White Only
3. SL-12 - Available in Polar White Only
4. SL-11 - Available in Kynar® or Galvalume®
5. Inquire for Polar White



Kynar 500® is a registered trademark of Arkema, Inc.  
Galvalume is a registered trademark of BIEC International, Inc.  
© SBS All rights reserved

valspar



1.877.257.BLDG (2534)  
www.sbslp.com

**TEXAS**  
17600 Badtke Road  
Hockley, TX 77447

**ALABAMA**  
3387 Davey Allison Blvd. 2141 Second Ave. SW  
Hueytown, AL 35023 Cullman, AL 35055